

# Glossary

- DMH:** The Mississippi Department of Mental Health
- DMH/BMR:** The Mississippi Department of Mental Health/Bureau of Mental Retardation
- CMS:** Centers for Medicare and Medicaid Services
- P & A:** Protection and Advocacy
- ICF/MR:** Intermediate Care Facility for the Mentally Retarded
- IDT:** Inter-Disciplinary Team
- P.O.C.:** Plan of Care
- D & E TEAM:** Diagnostic and Evaluation Team of Professionals located at one of the five Regional Centers (ICF/MRs) throughout the state.
- HCBS:** Home and Community Based Services
- PCP:** Person Centered Plan
- LOC:** Level of Care
- SSI:** Social Security Income
- CS:** Community Supports
- SE:** Supported Employment
- IHNR:** In Home Nursing Respite
- INCR:** In Home Companion Respite
- AC:** Attendant Care
- OT:** Occupational Therapy
- PT:** Physical Therapy
- ST:** Speech Therapy

For additional information,  
please contact:

**Millcreek Community Services**  
100-A Jadek Drive Northeast

P.O. Box 1100

Magee, MS 39111

1-601-849-2304 Phone

1-601-849-3715 Fax

[www.millcreekhcbs.com](http://www.millcreekhcbs.com)

## HOME & Community-Based Services (HCBS)

# Explained



## Millcreek Community Services

## Millcreek Community Services Overview

Millcreek Community Services was founded in 1999 to provide community based services to individuals with developmental disabilities. Millcreek is certified by the Mississippi Department of Mental Health to provide services through the Home and Community Based ID/DD Waiver Program. Millcreek has physical locations in Grenada, Tupelo, Jackson, Collins, Port Gibson, Moss Point and Long Beach. Millcreek delivers service in over 60 counties in the State of Mississippi.

Millcreek is committed to providing creative supports and services to people with disabilities. Millcreek continues to seek to provide supports/services according to current best practices in the field. Millcreek's goal is to allow people with disabilities to experience community life to its fullest.

Danny Cowart, Millcreek Community Services' CEO has been with Millcreek in that capacity since 2001. Prior to being CEO at Millcreek Community Services, Danny was Director of Support Coordination at the Boswell Regional Center for the ID/DD Waiver Services. Mr. Cowart brings 10 years of experience in waiver services to Millcreek.

The management team at Millcreek includes persons from medical, educational, social work and psychology fields with many years of experience in developing and managing programs for people with disabilities.

Millcreek has developed this plain language handbook to share helpful information about the services we provide with the individuals we serve and their families.

## What is the MR/DD Home and Community Based Waiver Program (ID/DD HCBS Waiver)?

The Home and Community Based Waiver Program is a Mississippi Medicaid program administered by the Mississippi Department of Mental Health. The program will help you live and stay in your community by giving you certain services/supports you may need to stay well and happy.

You must be eligible for ICF/MR services to get HCBS services. You will need to be determined eligible by one of the Diagnostic and Evaluation teams at one of the five Mississippi Department of Mental Health Regional Centers located through the state. You may call one of the Regional Centers to arrange an assessment and request ID/DD Waiver Services. You will then be placed on a waiting list for services. At some point in time you will be given a "SLOT" and placed in the program.

Once you are in the HCBS Program you can choose the Provider you wish to give you the services/supports you are approved to receive. Millcreek Community Services is an HCBS provider certified by the Mississippi Departmental of Mental Health and can give you the services you need.

These services can be provided in your own home, your family's home or in a community setting such as a job. Your time can be spent in the way you choose to have a "Meaningful Day". You can arrange a Plan of Care with the aid of your Support Coordinator for the services/supports to best meet your individual needs. The services offered through the HCBS program are listed below:



Attendant Care	Physical Therapy
In-Home Companion Respite	Occupational Therapy
In-Home Nursing Respite	Speech Therapy
Day Habilitation Services	Behavior Intervention/Support
Pre-Vocational Services	Supervised Residential Habilitation
Support Employment	Supported Residential Habilitation
Community Respite	

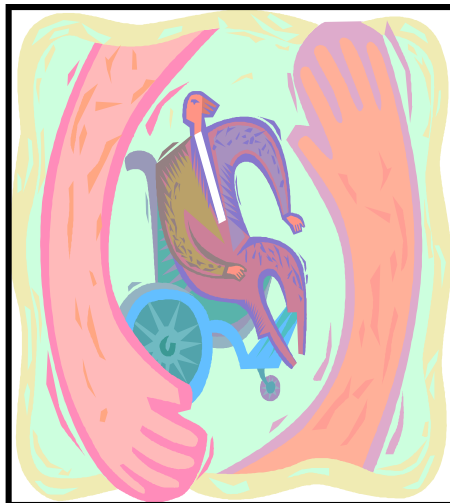
## How services can be provided are as follows:

**Attendant Care Services** provide staff support for activities at home and in community settings. Direct Support Professionals can assist you in activities such as personal hygiene, grooming and dressing. Direct Support Professionals can assist you in leisure and social activities in the community.

**Respite Services (Nursing or Companion)** provide staff to support you at your home while giving a break to your primary care giver.

**Day Habilitation Services** provide opportunities for you to be involved in activities in your community. Transportation is provided both to and from the place you live. You will begin to develop a schedule of activities, times and places you like to visit and things you like to do. You will be afforded opportunities to complete the activities on your schedule as independently as possible.

**Prevocational Services** are very similar to Day Habilitation Service with more emphasis on Vocational or work skills.



**Community Respite Services** give you support in a community setting while giving respite to your primary care giver.

**Behavior Support/Intervention Services** assist you in maintaining behaviors that allow you to be involved in activities in other services and settings. They help you cope with emotions you are unable to cope with yourself.

**Occupational and Physical Therapies** are provided to help you with adaptive equipment or activities such as walking or using computer keyboards.

**Speech Therapy** will help you let others know what you need.

**Supported Employment Services** will help you find and maintain a job.

## REFERENCES

Millcreek Community Services Home Page  
[www.millcreekhcbs.com](http://www.millcreekhcbs.com)  
601-849-4200

Mississippi Dept. of Mental Health  
[www.dmh.state.ms.us](http://www.dmh.state.ms.us)  
1-877-210-8513

Boswell Regional Center  
Magee, MS  
[www.brc.state.ms.us](http://www.brc.state.ms.us)  
601-857-5000

Hudspeth Regional Center  
Whitfield, MS  
[www.hrs.state.ms.us](http://www.hrs.state.ms.us)  
601-664-6000

North Mississippi Regional Center  
Oxford, MS  
[www.nmrc.state.ms.us](http://www.nmrc.state.ms.us)  
662-234-1476

South Mississippi Regional Center  
Long Beach, MS  
[www.smrc.state.ms.us](http://www.smrc.state.ms.us)  
228-868-2923

Ellisville State School  
Ellisville, MS  
[www.ess.state.ms.us](http://www.ess.state.ms.us)  
601-477-9384

## Your Enrollment In HCBS

- ◆ **Once you become eligible** for the HCBS program (this is called getting a slot) your Department of Mental Health Support Coordinator will call you or your family.
- ◆ **You/your family will meet with your Support Coordinator.** You/your family will talk about your needs with the support coordinator and decide on a Plan of Care. The Plan of Care will consist of the supports/services you need to work toward your goals and meet your individual needs.
- ◆ Your Support Coordinator will give you **a list of providers** of the Services/Supports you have placed on your Plan of Care. You can choose any provider to give you the services you want. You may change providers at any time after enrollment in the HCBS program.
- ◆ If you **chose Millcreek** to provide the services; a Program Director will introduce you to Millcreek personnel and services and set a date to **begin services**.

